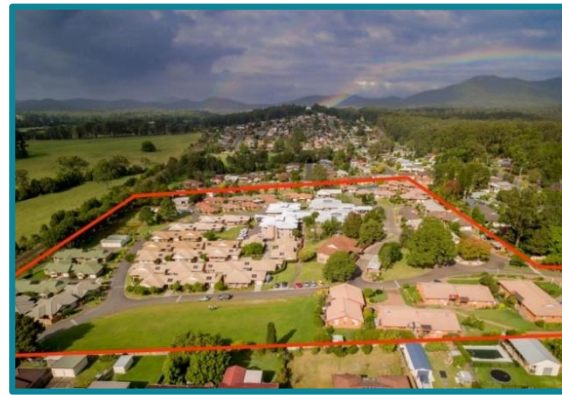
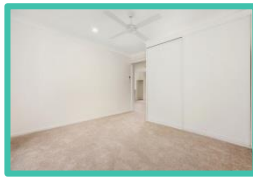


**FOR SALE**



**Unit 6, 142a Cameron St**      2 1 1



**You will fall in love with this beautiful, freshly renovated, two bedroom unit. With beautiful valley views, features include modern kitchen and bathroom, new carpet throughout, built-in wardrobes, air conditioning and garage.**

Imagine having the freedom to follow your dreams without the stress of maintaining your family home. Having fewer responsibilities would give you more time with your friends and family and most importantly give you more time every day to spend doing the things that make you happy.

Bundaleer Gardens is nestled in the most beautiful 12 acres of the Hastings Valley and represents a blend of history, beauty and tranquility.

All our units offer high standard, quality, secure, modern and desirable accommodation, designed to take advantage of the outstanding township of Wauchope.

Our facilities include a craft room, billiards/darts, library, games room for indoor bowls, meeting room for our various interest groups and more.

The village is within a peaceful setting, complemented by landscaped gardens, an outdoor BBQ area and a beautiful hinterland.

With the level of privacy and independence you would expect in your own home, as well as providing a wide range of social and community activities and the opportunity to make new friendships and connections, Bundaleer really is the perfect place to make friends and spend your retirement years.

Moving into a Retirement Village is an important lifestyle decision and you won't make a better decision than Bundaleer.

**Call us today on 6585 2811 to organise an inspection. We can't wait to meet you!**

*Note: Internal photos are indicative only.*